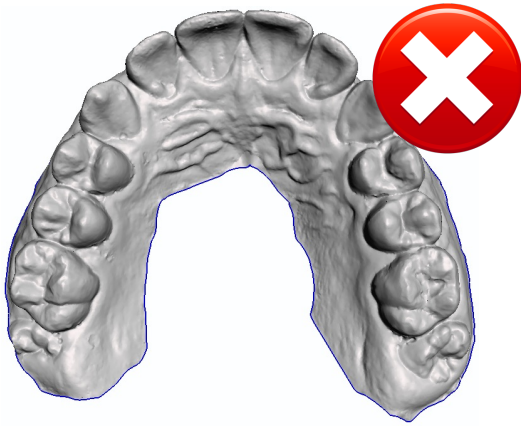


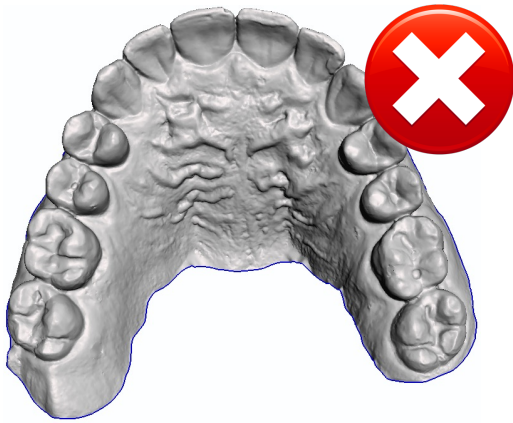
## Intraoral Scan Examples for Full Arch Acrylic Retainers



This example lacks the complete palate and would not work for an acrylic retainer. **This scan would be rejected** and would require you to call back the patient for a rescan. This *scan cannot be fixed* digitally or with a base and wax.

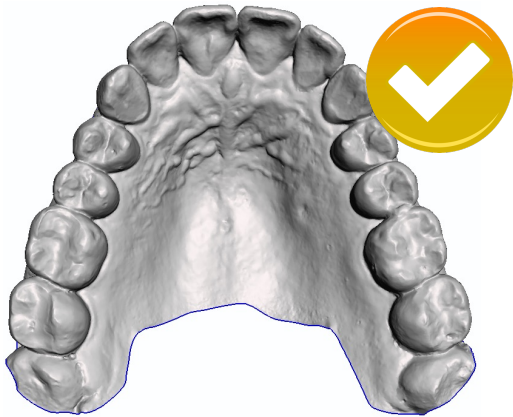
This would be acceptable for Essix or Positioners only.

---



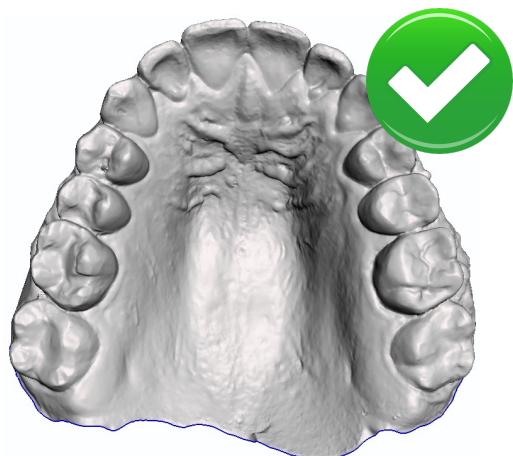
This scan lacks palate definition in the posterior region required up to the distal of the 2nd molars. The acrylic pouring process requires us to pour acrylic past the middle of the second molars, thus this scan would require additional fees to fix/repair the scan and to base and wax out the physical model. In a period of high volume, **this scan would be rejected.**

---



**This scan would be conditionally accepted** as it contains enough palatal definition back into the area of the second molars. However, the lack of a complete palatal scan *may require additional fees* to base and wax out the printed model as needed for the acrylic pouring process.

---

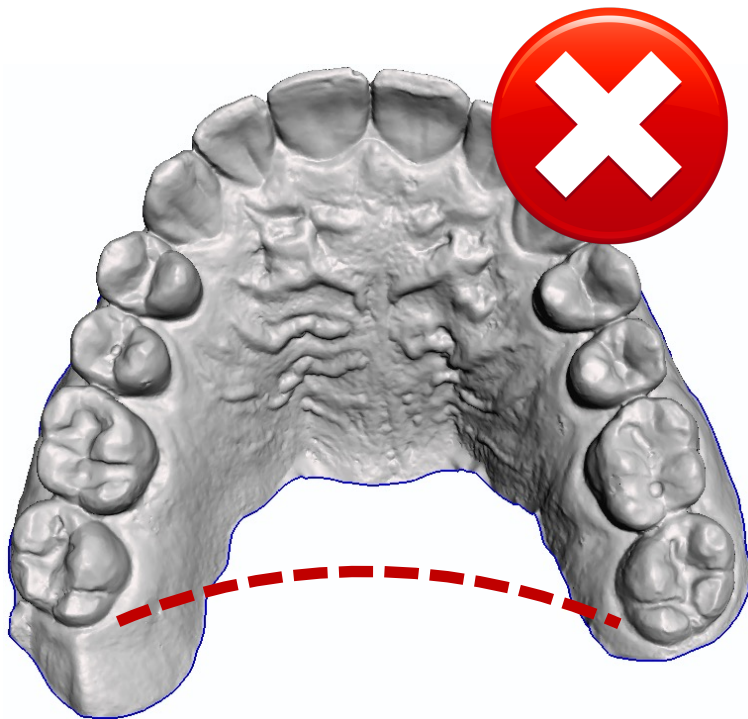


This scan contains all the necessary definition that we need to make ANY appliance. All teeth appear to be scanned completely without any distortions. All palatal areas are scanned and cover the complete area between the distal most teeth. **This scan would be accepted without question.**

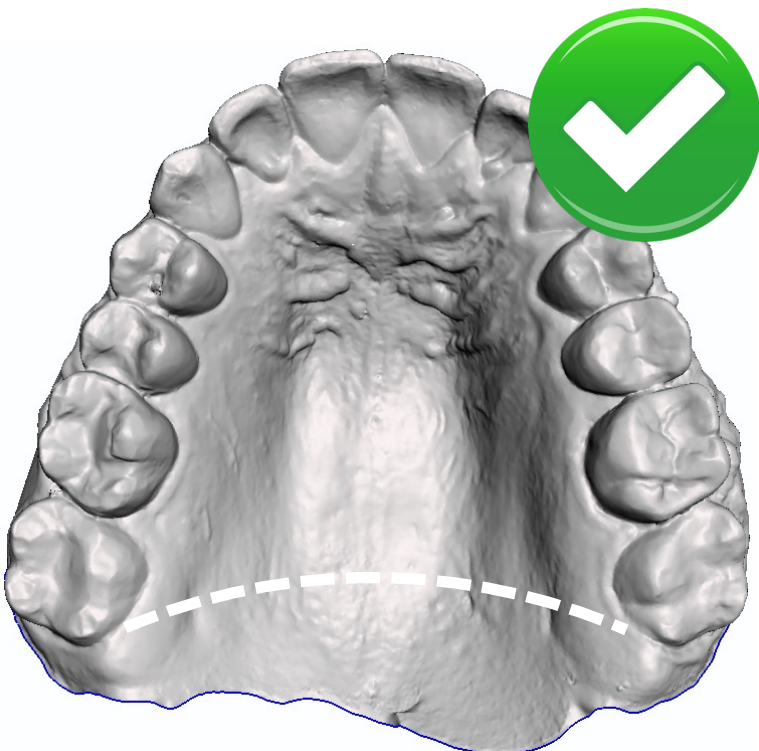
# ELIMINATE RESCAN APPOINTMENTS

If you make it a habit to scan a complete arch on all your patients, you will:

1. Receive less rejects (or additional fees) from your lab
2. Obtain complete records for your documentation
3. Become a better and more efficient scan technician



**Works ONLY for:**  
Invisible Retainers  
Tooth Positioners  
Horseshoe Trim



**Works for:**  
**ALL Appliances**